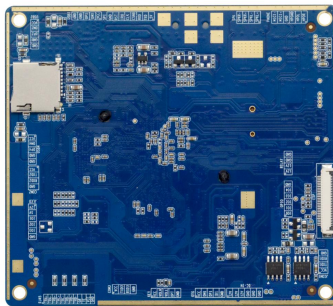
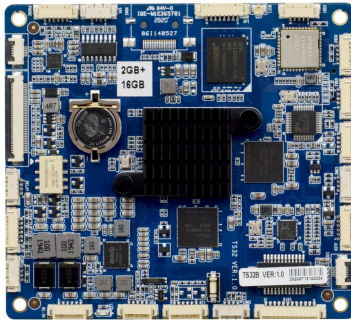


# TS32B VER:1.0

Based on RK3288 SOC platform\_Cortex-A17 Processor

[ Cortex-A17 ]



Specification:

<b>Model No.</b>	TS32B VER:1.0
<b>Processor</b>	CPU Rockchip RK3288 quad-core Cortex-A17 1.8GHz Processor
<b>Chipset</b>	Based on RK3288 SOC
<b>Memory</b>	Onboard LPDDR3 2G memory
<b>Display</b>	Integrated ARM Mali-T764 GPU, supports OPENGL ES1.1/2.0/3.0, OPEN VG1.1, OPENCL, Directx11
	1* EDP, 1* MIPI
<b>Ethernet</b>	1* RTL8211F Gigabit Ethernet chip
	1* WIFI/bluetooth module
<b>Storage</b>	1* eMMC memory chip, 16G
	1* TF card slot, is up to 64G
<b>Audio</b>	Onboard Everest ES8316 Audio chip, supports Line-out,MIC,power amplifier
	Supports power amplifier 2Ω5W/4Ω3W dual channels
<b>Expansion Slot</b>	N/A
<b>Rear I/O interface</b>	1* TF card slot ( rear )
<b>Built in I/O interface</b>	1* EDP, FPC specification, 30pin
	1* MIPI, FPC specification, 40pin, used to connect to MIPI screen
	3* TTL serial interface, 1* 4pin, PH=1.25mm
	1* Touch screen interface, FPC specification, 6pin
	1* Audio interface, 1* 6pin PH=1.25mm
	1* power amplifier interface, 1*4pin PH=1.25mm
	4* USB2.0, 1*5pin PH=1.25mm
	1* Network interface, 1*12pin PH=1.25mm
	1* I2C, FPC specification, 6pin
	1* SPI, 1*8pin PH=1.25mm, used to extend to COM
	1* LED interface, 1*6pin PH=1.25mm
	1* Front panel function button and indicator light interface, 1*6pin, PH=1.25mm
	1* OTG USB2.0, 1*5pin PH=1.25mm
	1* DC12V power interface, 1* 6pin PH=1.25mm

	1* Relay control lock interface, 1*4pin PH=1.25mm
<b>Power Type</b>	DC 12V single power input
<b>GPIO</b>	Support 4-way input output GPIO function
<b>OS</b>	Android 7.1, Ubuntu16.04, Linux (Qt+eglfs, pure command mode)
<b>Working temperature</b>	0℃~60℃
<b>Storage temperature</b>	-20℃~70℃
<b>Working Humidity</b>	5%-95% ( relative humidity, non-condensing)
<b>Dimension</b>	100mm x 90mm

Order information:

NO.	Model	Processor	Frequency	Memory	EDP	VGA	HDMI	LVDS	eMMC	WIFI	LAN	USB	COM	Power
1	TS32B VER:1.0	RK3288	1.8G	2G	1	/	/	/	16G	1	1*8211F	5	3	DC12V